

# Wigry

Complete filter  
for pond

clean water  
healthy fish  
time to relax



**AQUAEL**



# WIGRY

## What I am:



### T-piece

allows any distribution of the flow of water into a fountain and/or cascade\*



### Outlet adjustment within 30°

easy positioning of the device on uneven ground



### Telescopic outlet tube

smooth adjustment to the depth of the pond



### Transport handle

also used to retract the cable when storing the filter



### Power cord

with a length of 5 m



### LED signaling

UV lamp operation



### Installation of the filter below the water surface



### Fountain nozzle

effective oxygenation of water and a nice visual effect

**Universal**

**Impressive and discreet**

\*Cascade and waterfall not included.

# WIGRY

Effective water purification  
in 4 stages:

## 1. Mechanical filtration

The perforated housing retains large contaminants. The sponge cartridge retains smaller contaminants and protects biological media.

## 2. Biological filtration

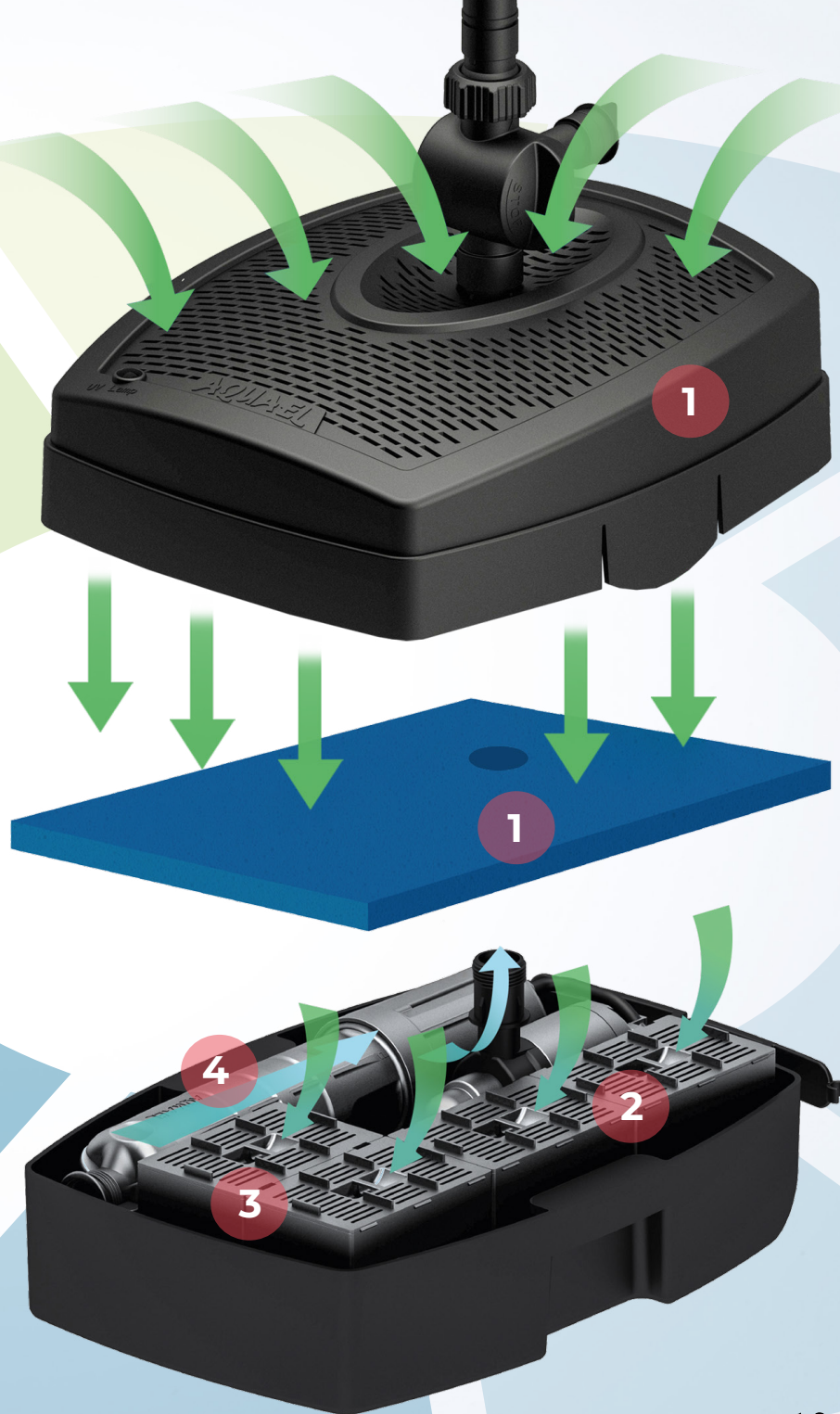
BioceraMax 600 biological media ensure biological balance




## 3. Chemical filtration

ZeoMax Plus chemical cartridge removes heavy metals from water, toxins and phenols

## 4. Sterilization

Built-in UV sterilizer, prevents the growth of algae and pathogens



|  | WIGRY 2000  | WIGRY 4000   | WIGRY 6000   |
|--|---|--|--|
| Pond velocity [l]  | 2000  | 4000   | 6000   |
| Total unit power [W]   | 27  | 34   | 36   |
| UV lamp wattage [W]  | 5   | 7  | 9  |
| Protection degree [IP]   | IPX8  | IPX8   | IPX8   |
| Pump capacity [l/h]  | 1500  | 2000   | 2000   |
| Hose diameter [mm/inch]  | 19 / 3/4"   | 19 / 3/4"  | 19 / 3/4"  |
| Number of filter baskets   | 3   | 4  | 4  |
| Installation inside the pond   | Yes   | Yes  | Yes  |
| UV filament lifetime   | up to 10 000 hr.  | up to 10 000 hr.   | up to 10 000 hr.   |
| Cable length [m]   | 5   | 5  | 5  |
| Dimensions [L × W × H ] [cm]:<br>with the fountain nozzle retracted<br>with fountain nozzle extended | 34 × 26,8 × 48,5<br>34 × 26,8 × 62,8  | 39,2 × 26,8 × 48,5<br>39,2 × 26,8 × 62,8   | 39,2 × 26,8 × 48,5<br>39,2 × 26,8 × 62,8   |
| Index  | 130516  | 130517   | 130519   |
| Pallet quantity [pcs.]   | 51  | 51   | 51   |
| EAN code   | <br>5 905546 338912 | <br>5 905546 338929 | <br>5 905546 338936 |