



**AQUAEL**

# NEO 300

Interchangeable cartridges,  
flat shape

# NEO 300

## Cartridge filter

Neo 300 is an internal cartridge-panel filter for freshwater aquariums.

Flat shape, convenient replacement of the panel for filter media and ready-made cartridges - its operation is really simple.

Maximum throughput of the Neo 300 filter head reaches **320 l/h**. It is suitable for aquariums with a capacity of up to 100 l.



# NEO 300

Cartridge filter

User  
friendly



convenient  
mounting  
bracket

quickly and easily replaceable  
filter cartridges – the motor  
remains in the water

flat shape  
easy to cover up  
behind the design

easy removal of rotor  
during maintenance



# NEO 300

## Cartridge filter

### Adaptation according to individual needs

precise flow regulator

two outlet nozzles  
and an adapter for  
accessories included

can be hung up  
vertically or horizontally

easily replaceable  
function inserts



# NEO 300

## Cartridge filter

Replaceable  
filter output  
nozzles include  
d



180° wide flow nozzle –  
aerates the water thanks to  
movement of the water  
surface

accessory  
adapter

directional flow nozzle  
and aeration –  
free setting of the  
outlet direction

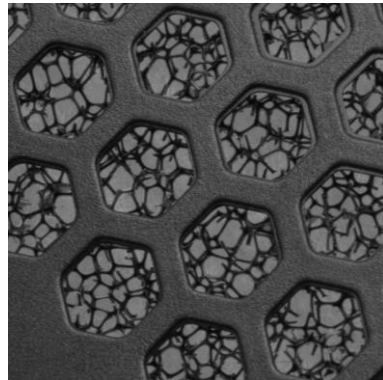
sprinkler\* –  
additional accessory

\*Not included

# NEO 300

Cartridge filter

Efficient  
filtration



**STANDARD  
WOOL**



**CARBOMAX**



**PHOSMAX**

efficient pump design  
with a flow rate 320 l/h

effective mechanical  
filtration thanks to  
replaceable function  
cartridges

additional coarse  
sponge - retains  
large dirt particles

dedicated  
replaceable function  
cartridges

# NEO 300

Dedicated  
filter cartridges



\*Included with the filter



## STANDARD WOOL

- replacable cartridge made of filter wool
- efficient mechanical filtration



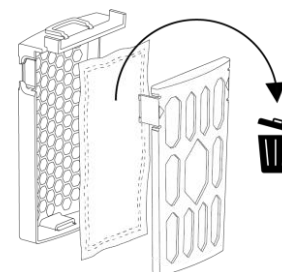
## CARBOMAX\*

- replacable cartridge made of filter wool with added cative carbon
- additionally eliminates chemical impurities and discolourations



## PHOSMAX

- removes phosphates from water
- prevents algae blooms caused by excessive phosphate levels



When performing maintenance only discard the cartridge insert



# NEO 300

Cartridge filter



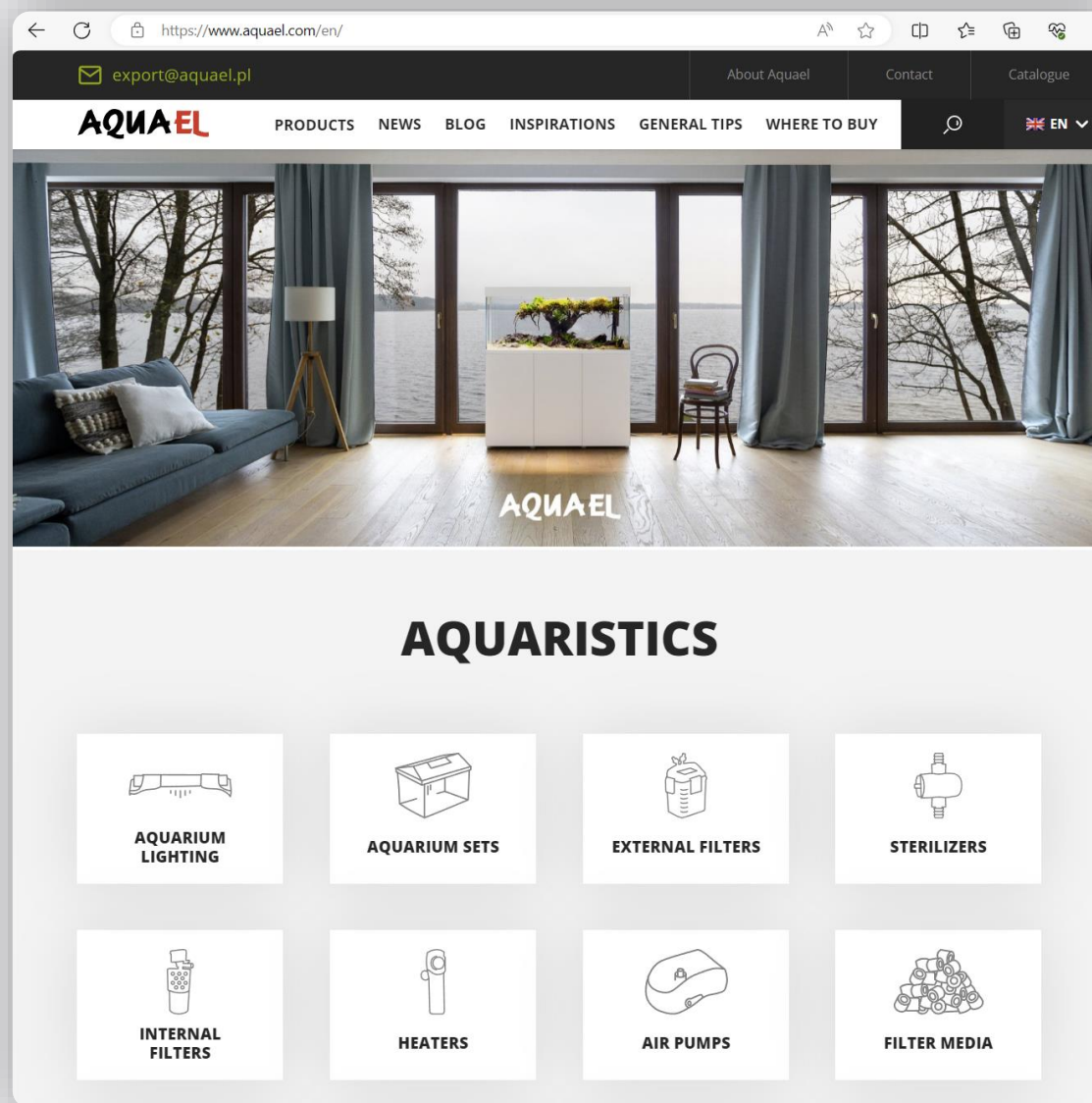
Data	NEO 300
Dimensions (width x depth x height)	10 × 5,5 × 21,5
Tank capacity [l]	< 100
Flow rate [l/h]	320
Power [W]	4,5
Number of cartridges (pcs.)	1
Art. nr.	133419



# AQUAEL

Visit our  
webpage  
and learn  
more

learn more >>



**AQUAEL**

AQUAEL sp. z o.o.  
ul. Krasnowolska 50  
02-849 Warsaw, Poland

+48 22 644 76 16  
export@aquael.pl  
www.aquael.pl